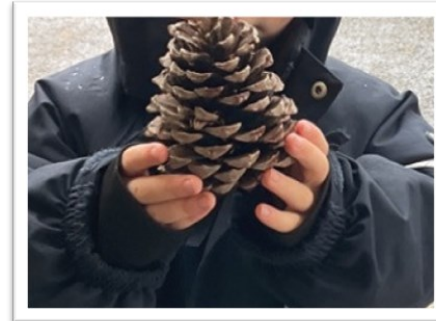


Dear Parents and Carers,

The children have loved **exploring the signs of Autumn** at Noah's Ark this week. They have been making natural patterns with shells and pine cones, playing with conkers and coloured leaves and making their own hedgehogs using plasticine and matchsticks. We have been thinking about the world around us and using our Thinking Time sessions to talk about the stars, sun, moon, planets and space and looking at photographs of children from around the world. Some children have had a go at drawing or painting a self-portrait. These activities help the children to make sense of the wonderful world around them and to develop a broad understanding of their world and wider community.



We have had a visit from the church minister Maki, who has talked to us about the importance of **donating to the foodbank**. If you are able to donate any dried or tinned food, toothpaste or toothbrushes, we have a donation box at Noah's Ark at the front door in the corridor.



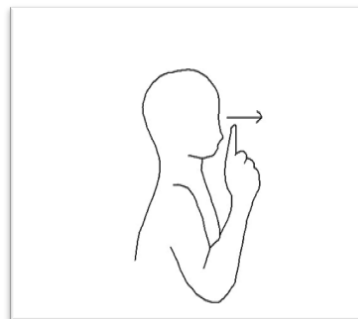
To tie in with our exploration of the changing season and the world in which we live, our **Makaton sign of the week this week is to 'Look'**.

Cairns Road Baptist Church are delighted that they are relaunching their **Small Space 0-4's playgroup** on Thursday mornings from 10-11:30am. They are looking forward to sharing craft, stories and songs together and hope that you will be able to come if your child is not at Noah's Ark on a Thursday, or if you have a younger child to take along. Suggested donation for the session is £3 per adult and child, with each additional child being a further £1.



Thank you to families that have sent in photos of their news and what they have been up to for our new display. Please continue to send them in, no matter how small. The children love discussing the news!

We will be making apple crumbles next week. If anyone has had a glut of **apples** or has any that they feel able to donate, we would be really thankful.



Have a lovely weekend,

The Noah's Ark Team.



